

Drain cock for canisters with thread DIN 61

Description

For canisters and drums. Is suitable for a simple, clean and fast siphoning of fluids. Drain cock with airing.

Areas of application

Suitable for thread sizes DIN 61.

Comment

Suitable for the following articles:

Part no. 1654, Universal Cleaner, 5 l

Part no. 1655, Universal Cleaner, 20 l

Part no. 1840, Rapid Cleaner, 5 l

Part no. 2336, Pro-Line Super Diesel Additive K, 20 l

Part no. 2525, Diesel Purge, 5 l

Part no. 2824, Rapid Cleaner, 5 l

Part no. 3309, Multi-Spray Plus 7, 5 l

Part no. 3319, Rapid Cleaner, 5 l

Part no. 3395, LM 40 Multi-Purpose Spray, 5 l

Part no. 3611, Rapid Rust Solvent, 5 l

Part no. 3710, Oil Additive, 5 l

Part no. 3956, Rapid Cleaner, 5 l

Part no. 4008, Universal Cleaner NTA free, 20 l

Part no. 4120, Leak Finder, 5 l

Part no. 4295, LM 17 Synthetic Oil, 5 l

Part no. 4383, LCP 55 Long-Term Protection, 5 l

Part no. 4414, LM 750 Compressor Oil SAE 40, 5 l

Part no. 5037, Pro-Line Truck Diesel Particulate Filter Cleaner, 5 l

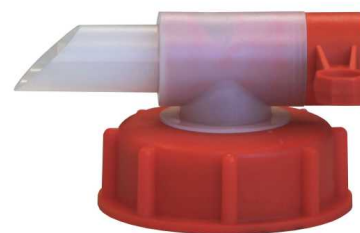
Part no. 5109, Diesel Flow Fit, 20 l

Part no. 5132, Diesel Flow Fit K, 5 l

Part no. 5140, Super Diesel Additive, 5 l

Part no. 5179, Pro-Line Automatic Transmission Cleaner, 5 l

Part no. 6928, Windshield Antifreeze Concentrate



-60 °C, 60 l

Part no. 8190, Universal Cleaner Extreme, 11 kg

Part no. 8191, Universal Cleaner Extreme, 35 kg

Part no. 8192, Acid Rim Cleaner, 11 kg

Part no. 8193, Acid Rim Cleaner, 35 kg

Part no. 8194, Glass Cleaner, 10 l

Part no. 8195, Glass Cleaner, 33 l

Part no. 8198, Gloss Waxing Shampoo, 10 l

Part no. 8199, Gloss Waxing Shampoo, 25 l

Part no. 20603, Super Diesel Concentrate, 20 l

Part no. 20605, Speed Tec Diesel Concentrate, 20 l

Part no. 20760, Maintenance and Anti-Corrosion Oil, 5 l

Part no. 20814, Compressor Oil B 68, 5 l

Part no. 21207, Diesel Cleaning Additive, 20 l

Available pack sizes

1 pcs Carton 3378
D

Our information is based on thorough research and may be considered reliable, although not legally binding.